

## Brazilian Journal of Forensic Sciences, Medical Law and Bioethics

Journal homepage: [www.ipebj.com.br/forensicjournal](http://www.ipebj.com.br/forensicjournal)



### NBOMe Designer Drugs: GC-MS and LC-QTOF/MS Detection on Blotter Paper by Brazilian Federal Police (Rio Grande do Sul, Brazil)

Carlos Alberto Yasin Wayhs<sup>1\*</sup>, Monique dos Reis<sup>1</sup>, Kristiane de Cássia Mariotti<sup>2</sup>,  
Wanderson Romão<sup>3</sup>, Boniek Gontijo Vaz<sup>4</sup>, Fabiano Barreto<sup>5</sup>, Rafael Scorsatto Ortiz<sup>6</sup>,  
Renata Pereira Limberger<sup>1</sup>

<sup>1</sup> *Faculdade de Farmácia, Laboratório de Análises e Pesquisas Toxicológicas, Universidade Federal do Rio Grande do Sul, Avenida Ipiranga 2752, Porto Alegre, Rio Grande do Sul, Brasil, CEP: 90610-000.*

<sup>2</sup> *Grupo de Identificação da Superintendência de Polícia Federal no Rio Grande do Sul, Avenida Ipiranga 1365, Azenha, Porto Alegre, Rio Grande do Sul, Brasil, CEP: 90610-093.*

<sup>3</sup> *Universidade Federal do Espírito Santo, Avenida Fernando Ferrari 514, Goiabeiras, Vitória, Espírito Santo, Brasil, CEP: 29075-910.*

<sup>4</sup> *Universidade Federal de Goiás, Campus Samambaia, Itatiaia, Goiânia, Goiás, Brasil, CEP: 74001970.*

<sup>5</sup> *LANAGRO – Laboratório de Análise de Resíduos de Pesticidas e Medicamentos Veterinários – RPM, Ministério da Agricultura, Pecuária e Abastecimento, Avenida Serraria 3036, Ponta Grossa, Porto Alegre, Rio Grande do Sul, Brasil, CEP: 91770-010.*

<sup>6</sup> *Setor Técnico-Científico, Superintendência Regional do Departamento de Polícia Federal no Rio Grande do Sul, Avenida Ipiranga 1365, Azenha, Porto Alegre, Rio Grande do Sul, Brasil, CEP: 90610-093.*

\* Corresponding author. E-mail: [manowayhs@yahoo.com.br](mailto:manowayhs@yahoo.com.br). Phone: +55-51-3308-5762.

**Abstract.** The NBOMes are classified as new psychoactive substances and have recently become popular as drugs of abuse, being associated with several intoxication cases and even deaths, leading to its ban in several countries. Until now, the most widely used analytical instrument among forensic laboratories in Brazil is GC-MS. In this study, this instrumentation was employed for routine analyzes of twenty blotter paper seizure by Brazilian Federal Police (BFP) in the southernmost state of the country. However, to acquire more information about these samples, LC-QTOF/MS was used as a supplementary analysis to determinate degradation products, metabolites and unknown compounds. The GC-MS analysis detected only 25B-NBOMe, while the LC-QTOF/MS analysis detected 25B-NBOMe, 2C-B and MDMA. The compounds found in these analyzes are quite different from that found

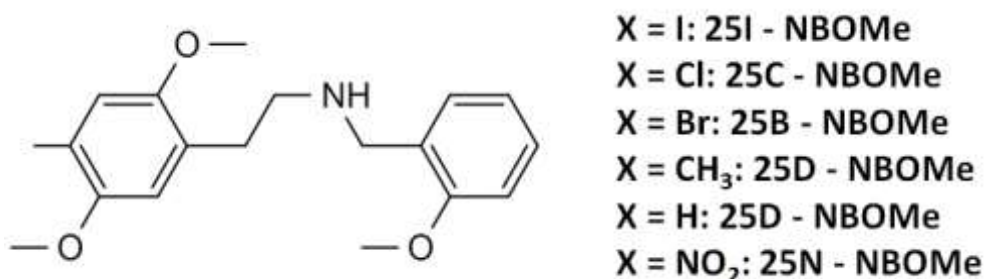
in the national profile of seizures by BFP, suggesting that another route or supplier act in this region. For research and drug intelligence purposes the use of more versatile, sensitive and specific analytical tool provides a greater number of information that could be employed as a valuable strategy in the drug trafficking combat.

**Keywords.** Designer drugs; NBOMe; 25B-NBOMe; GC-MS; LC-QTOF/MS.

## 1. Introduction

New psychoactive substances (NPS), also known as designer drugs, has become an issue regarding public health in many parts of the world, demanding constant improvements on the chemistry, pharmacology and toxicology of such substances and on their legal regulation as well<sup>1-3</sup>. As a consequence of globalization, when a NPS is discovered or synthesized it is rapidly revealed to the entire world by “dark net”<sup>4,5</sup>. In this context, United Nations’ world drug annual report 2017 indicate that the NPS market continues to be very dynamic and is characterized by the emergence of large numbers of new substances belonging to diverse chemical groups, like tryptamines, synthetic cathinones, synthetic cannabinoids, piperazines, phenethylamines, among others. Between 2009 and 2016, 106 countries and territories reported the emergence of 739 different NPS to UNODC<sup>5</sup>.

Marketed in many different ways and forms, like blotter papers, seals, tablets, crystals, among others, new substances often emerge quickly and disappear again, while some become used regularly among a small group of users. Over 80 NPS were reported every year during the period 2009-2015 and appear to have become established on the global market; a number of them have been placed under international control. On the other hand, about 60 NPS seem to have disappeared from the market since 2013. Problems in identifying them in a laboratory may be a factor, however, in the low level of reporting of these lesser-known substances<sup>5</sup>. Another factor is due to the versatility of the changes occurring in the molecules and the speed with which they appear in the market, being faster the development of new molecules than the tools for unequivocal identification and even faster than them have been placed under international control<sup>6</sup>. Among the wide variety of NPS, the NBOMe designer drugs (Figure 1) have been attracting attention from medical and legal issues, due to its association with several intoxication cases and even deaths, leading to its ban in several countries, including Brazil<sup>1,6-8</sup>.



**Figure 1.** Chemical structures of NBOMe designer drugs.

The most widely used analytical instrument among forensic laboratories by Brazilian Federal Police (BPF) is the gas chromatography-mass spectrometry (GC-MS). In this study, routine analyzes for drug determination in blotter paper seized by BFP in the State of Rio Grande do Sul, Brazil were done. However, to acquire more information about the samples blotter papers proceeding from Rio Grande do Sul BFP seizures performed in 2016, the liquid chromatography coupled to hybrid quadrupole time-of-flight mass spectrometer (LC-QTOF/MS) was also employed as a supplementary analysis to determinate degradation products, metabolites and unknown compounds for research and drug intelligence purposes, as a valuable strategy in the drug trafficking combat.

## 2. Material and methods

### 2.1 Samples

The sample set consisted of twenty blotter papers proceeding from a single BFP seizure performed in 2016.

### 2.2 GC-MS method

#### 2.2.1 Sample preparation

For GC-MS analysis the entire samples of each blotter papers were extracted with 3 mL of methanol by sonication for 3 min in ultrasonic bath and after were vortexed for 1 min. 1 mL of the resulting supernatant solution was transferred to a GC vial ready for injection.

#### 2.2.2 GC-MS

Chromatographic separation was performed on an Agilent 6890 N gas chromatograph coupled to an Agilent 5973 mass selective detector (Agilent

Technologies, Palo Alto, CA, USA). A commercially available 25 m DB-1MS capillary column, with 0.20 mm inner diameter and a 0.33  $\mu\text{m}$  film thickness was used as the stationary phase (DB-1MS, Agilent J&W Scientific, Folsom, CA, USA). Helium (99.9999% purity) was used as the carrier gas at a constant flow rate of 1.0 ml/min. Injection of 1.0  $\mu\text{L}$  of sample solution was performed automatically in split mode with split ratio 5:1. The injector was maintained at 280°C. The column temperature program was as follows: starting at 100°C then holding for 2 min, followed by subsequent heating to 300°C at a heating rate of 12°C/min. The final temperature was held at 300°C for 10 min. The solvent delay was set to 1.8 min. The interface, ion source and quadrupole temperatures were 280°C, 230°C and 150°C, respectively. The MS system was operated in electron ionization mode at 70 eV and the positive ions were analyzed. Acquisition was carried out in scan mode from 40 to 550 amu. Under these conditions, the retention time (RT), the mass spectrum computerized databases (NIST02) and the data coming from literature was used for 25B-NBOMe identification.

## **2.3 LC-QTOF/MS method**

### **2.3.1 Chemicals and reagents**

Acetonitrile (ACN; HPLC grade) was purchased from Merck (Darmstadt, Germany), deionized ultra-pure water (<18.2 M $\Omega$  cm resistivity) was obtained from a Milli-Q SP Reagent Water System (Millipore, Bedford, MA, US). Formic acid was supplied from J. T. Baker (Center Valley, PA, U.S).

### **2.3.2 Sample preparation**

For LC-QTOF/MS, an aliquot of the methanolic solution of entire samples was diluted with a Methanol:Water solution (50:50). After dilution, the tubes were vortexed for 30 seconds, centrifuged at 2600 g for 7 minutes at 25°C. 1.5 mL of the supernatant from each sample was transferred to an amber vial with a capacity of 1.5 mL. An aliquot of 10  $\mu\text{L}$  were diluted with 990  $\mu\text{L}$  of water containing 0.1% of formic acid.

### **2.3.3 LC-QTOF/MS**

LC-QTOF/MS was used to carry out qualitative analysis. The system was composed of a LC Agilent 1260 Infinity (Agilent Technologies, Palo Alto, CA, USA) and mass

spectrometer 5600 TripleTOF system (Sciex, Framingham, MA, US). Chromatographic separation was performed using an analytical column Waters X-Terra® C18 (100 x 2.1 mm, 3.5 mm) and a guard column (5 µm, 4.0 x 3.0 mm) (Phenomenex). The column was kept at 40°C. A binary mobile phase was used with a flow of 300 µL min<sup>-1</sup> in a total run time of 14 minutes. Mobile phase component A was an aqueous solution of 0.1% formic acid and component B was ACN with 0.1% formic acid. The gradient was optimized for the separation, and began with 95% A that decreased linearly to 10% A (4 min) and held at that concentration until 12 minutes. Finally, A was increased linearly over 1 minute back to 95% and kept at this concentration for 1 minute. An equilibrate time of 4 minutes was applied. The sample injection volume was 2 µL.

Mass spectrometer source dependent parameters were set as follows: collision gas (CAD) 4 psi, curtain gas (CUR) 20 psi, ion source gas 1 (GS1) 55 psi, dryer gas (GS2) 55 psi, interface heater temperature (IHT) 400°C, ion spray voltage floating (ISVF) 4500 V. Data acquisition was performed using AnalystTF® software. Data treatment applied PeakView® and MultiQuant® (Sciex, Framingham, MA, US), in a full scan TOF/MS mode in a mass range from 100 to 1000 Da with an IDA (Information Dependent Acquisition) criterion established as higher than 1000 counts, in a maximum of four candidates simultaneously. Selected ions were fragmented with collision energy of 35 ± 15 eV. Compounds were selected based on compound exact mass and searching window of ± 0.0030 Da.

### 3. Results and discussion

NBOMes have recently become popular as drugs of abuse<sup>9</sup> and some compounds of this class of substances, like 25I-NBOMe, 25C-NBOMe, 25D-NBOMe, 25B-NBOMe, were considered illegal in Brazil since 2014<sup>10</sup>. The first identification of NBOMes in BFP was in 2012 and from that year until June 2016 the number of expert reports positive to NBOMes detection totaled 186 in the whole country. The main form of seized was blotter paper or micro blotter paper (more than 83,000 units)<sup>6</sup>. Until now, the most widely used analytical instrument among forensic laboratories in Brazil by BFP is GC-MS, so for this study, routine analyzes with this instrumentation were done. To acquire more information about the samples, LC-QTOF/MS was employed as a supplementary analysis to determinate degradation products, metabolites and unknown compounds.



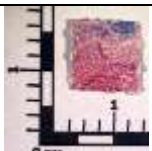
As expected, considering the high resolution and the high sensitivity of the LC-QTOF/MS detected some compounds that were not detected in GC-MS. The analysis performed by GC-MS detected only 25B-NBOMe (characteristic fragment  $m/z$ : 91, 121, 150, 346; RT 18.01 min). The analysis performed by LC-QTOF/MS detected 25B-NBOMe (mass range -  $m/z$  - 380.0829; RT 6.14 min), 2,5-dimethoxy-4-bromophenethylamine (2C-B) (mass range -  $m/z$  - 260.0256 - 260.0316 at RT 5.60 min) and 3,4-methylenedioxymethamphetamine (MDMA) (mass range -  $m/z$  - 194.1151 – 194.1211 at RT 5.02 min). The presence of other compounds were also investigated: caffeine (mass range -  $m/z$  - 195.0852 - 195.0912); ethylone (mass range -  $m/z$  - 222.1100 - 222.1160); ketamine (mass range -  $m/z$  - 238.0968 - 238.1028); amphetamine (mass range -  $m/z$  - 136.1096 - 136.1156); 3,4-methylenedioxyamphetamine (mass range -  $m/z$  - 180.0994 - 180.1054); 4-fluoramphetamine (mass range -  $m/z$  - 154.1002 - 154.1062); and methamphetamine (mass range -  $m/z$  - 150.1252 - 150.1312). LC-QTOF/MS Compound Targets are describe on Table 1. The physical characteristic and the substances identified from the analysis of the twenty (20) blotter papers samples by GC-MS and LC-QTOF/MS analysis are describe on Table 2.

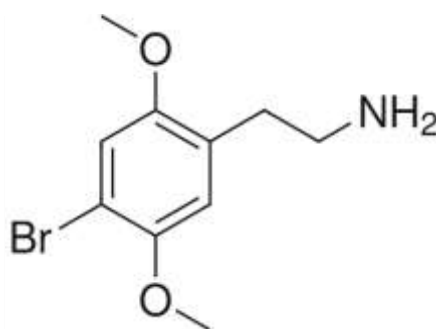
**Table 1.** LC-QTOF/MS Compound Targets.

Compounds	Molecular Formula	Molecular Weight	Exact Mass	[M+H] <sup>+</sup>	Mass range [M+H] <sup>+</sup>	
Caffeine	C <sub>8</sub> H <sub>10</sub> N <sub>4</sub> O <sub>2</sub>	194,1900	194,0804	195,0882	195,0852	195,0912
MDMA	C <sub>11</sub> H <sub>15</sub> NO <sub>2</sub>	193,2500	193,1103	194,1181	194,1151	194,1211
Ethylone	C <sub>12</sub> H <sub>15</sub> NO <sub>3</sub>	221,2500	221,1052	222,1130	222,1100	222,1160
Ketamine	C <sub>13</sub> H <sub>16</sub> CINO	237,7200	237,0920	238,0998	238,0968	238,1028
Anfetamine	C <sub>9</sub> H <sub>13</sub> N	135,2000	135,1048	136,1126	136,1096	136,1156
Tenamfetamina (MDA)	C <sub>10</sub> H <sub>13</sub> NO <sub>2</sub>	179,2100	179,0946	180,1024	180,0994	180,1054
4-Fluoroamphetamine	C <sub>9</sub> H <sub>12</sub> FN	153,2000	153,0954	154,1032	154,1002	154,1062
Methamphetamine	C <sub>10</sub> H <sub>15</sub> N	149,2000	149,1204	150,1282	150,1252	150,1312
2-CB	C <sub>10</sub> H <sub>14</sub> BrNO <sub>2</sub>	260,1300	259,0208	260,0286	260,0256	260,0316
25B-NBOMe	C <sub>18</sub> H <sub>22</sub> BrNO <sub>3</sub>	379,0781	379,0781	380,0859	380,0829	380,0889

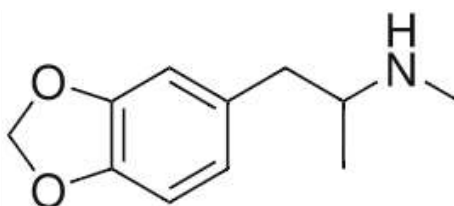
For legal and criminal purposes, the current Brazilian legislation determines that the sample identification of proscribed compounds is sufficient for law procedures, not being necessary its quantification. Considering the national norm this study focused only on the designer drug determination. Although, complementary studies about drug quantification are highly recommended.

**Table 2.** Analysis of 20 samples of blotters paper seized by the Brazilian Federal Police in the State of Rio Grande do Sul. \* Data represent Mean  $\pm$  Standard Deviation. 2C-B : 2,5-dimethoxy-4-bromophenethylamine (Figure 2). MDMA: 3,4-methylenedioxymethamphetamine (Figure 3). 25B-NBOMe: 2-(4 -bromo-2,5-dimethoxyphenyl)-N-(2-methoxybenzyl) ethanamine (Figure 4).

Blotter Paper Samples	Design Exemple	Weight (mg)*	Dimensions (mm)*	GC-MS identifications	LC-QTOF/MS identifications
1 - 11	 "Blue Background"	12.22 $\pm$ 0.76	6.59 $\pm$ 0.27 X 6.59 $\pm$ 0.45	25B-NBOMe	25B-NBOMe + 2C-B
12 - 18	 "Pink Panther"	16.86 $\pm$ 0.98	9.66 $\pm$ 0.16 X 9.32 $\pm$ 0.21	25B-NBOMe	25B-NBOMe + 2C-B
19 - 20	 "Pink Panther"	16.70 $\pm$ 0.42	9.53 $\pm$ 0.18 X 9.53 $\pm$ 0.39	25B-NBOMe	25B-NBOMe + 2C-B + MDMA



**Figure 2.** Chemical structure of 2 C-B.



**Figure 3.** Chemical structure of MDMA.

The results present here are surprising considering the data from the survey done by Wayhs *et al.* 2016, when the 25I-NBOMe and the 25C-NBOMe were present in 70.27% of the positive expert reports for NBOMes. The 25B-NBOMe represented only 19.41% of the total. Also, the most prevalent banned substance found within NBOMes analysis was 3,4-methylenedioxymethamphetamine (MDMA)<sup>6</sup>. Different from the Brazilian's standard seizures, in the State of Rio Grande do Sul, the analytical results shown that 25B-NBOMe was present in 100% of samples, 2,5-dimethoxy-4-bromophenethylamine (2C-B) non-target compound was detected in all samples and MDMA was present in only two samples. It is noteworthy that a possibility of contamination is discarded, in view of the MDMA's chromatographic peak signal intensity. These data strongly demonstrate that the extreme south of Brazil is supplied by drug trafficking routes different from those commonly found in other states of the country (coming from different illegal location and/or suppliers). This analytical finding suggest that another routs of synthesis and a bigger range of raw material, excipients and active ingredients must be monitored, following the trends of drug dealers, once it is known that MDMA can be synthesized from different synthesis routes. In this context, chemical profile studies have been determined different contaminants or synthetic impurities, such as co-products, for example, may point to the use of one or the other pathway to obtain MDMA<sup>11,12</sup>. The 2C-B seems to be the most important substances within the substituted phenethylamines class of designer drugs and 25B-NBOMe appears as its novel and highly potent derivative<sup>13</sup>. In these samples, the presence of 2C-B may be seen as a synthesis residue, probably being an excess of precursor that has not been consumed during the reaction of 25B-NBOMe production.

2C-B is a synthetic psychedelic drug that is structurally related to mescaline and was first synthesized in the mid-1970s<sup>14</sup>, gained certain popularity as a legal substitute for MDMA after its prohibition in 1985<sup>15</sup>. 2C-B was legal in most countries until the mid-1990s, when it became a controlled drug in most countries, including Brazil<sup>10</sup>. It is, moreover, commonly employed in combination with other illegal drugs, particularly MDMA<sup>16</sup>, and is considered to be one of the favorites on the global drug market<sup>17</sup>. In addition, 2C-B is among the chemical compounds most often found as an adulterant when analyzing MDMA seizures<sup>18,19</sup> which signifies that many individuals have consumed it unknowingly<sup>16</sup>.



These designer drugs are commonly produced in clandestine laboratories and are often synthesized from chemicals of unknown origin<sup>18</sup>. The composition of these illicit preparations can vary significantly depending on the mode of synthesis, purification methods, source materials, and the presence of cutting agents and excipients used<sup>20-23</sup>. The understanding of the NPS dynamic market can support more effectively the requires efforts on different fronts to provide countries to improve their forensic analytical capacity relating to NPS detection; to develop or upgrade their monitoring systems of drug trafficking or drug abuse; to provide medical clinics with real data on street drugs and their health consequences<sup>5</sup>.

To date, only few and very recently papers about blotter paper samples seizures in Brazil were published<sup>1,9,13,24-26</sup>. The present study is a small start in the sense of to know the actual scenario of the blotter paper drug market. It is necessary to perform studies with large range of samples and, although the quantification it is not mandatory for legal purposes, it is recommended that researches in this field have incentives. From forensic intelligence point of view these information brings a soft but valuable assistance for the investigation, prevention and combating of drugs trafficking.

#### **4. Conclusions**

In this study GC-MS and LC-QTOF/MS were used to identification of NPS in blotter samples seized by BFP in the state of Rio Grande do Sul. The analysis performed under routine GC-MS conditions detected 25B-NBOMe in all samples and complementary analysis by LC-QTOF/MS detected 25B-NBOMe and 2C-B in all samples and MDMA in two samples. The detected compounds are quite different from the national profile seizures by BFP, which may be associated with another route or supplier act in this region. Although, to be able to affirm more accurately about the different traffic routes and their origins, it is necessary to carry out a more comprehensive chemical profile study and, preferably, use multivariate analysis techniques. In this context, for research and drug intelligence purposes the use of more versatile, sensitive and specific analytical tool provides a greater number of information that could be employed as a valuable strategy in the drug trafficking combat.

## Acknowledgements

The Federal Police Department of Rio Grande do Sul (Porto Alegre / RS) for providing the data for this work. Conselho Nacional de Desenvolvimento Científico e Tecnológico (CNPq). Coordenação de Aperfeiçoamento de Pessoal de Nível Superior (CAPES). This work was supported by CAPES, the Forensic Sciences Announcement Nº 25/2014 - "PRO-FORENSIC 3357/2014", Proceeding Nº. 23038.006845/2014-9, entitled "Scientific Exchange and Training Human Resources between Federal University of Espírito Santo (UFES), Goiás (UFG) and Rio Grande do Sul (UFRGS) with the Federal Police of Rio Grande do Sul."

## Conflict of interest

The authors declare that there are no conflicts of interest.

## References

1. Coelho Neto J. Rapid detection of NBOME's and other NPS on blotter papers by direct ATR-FTIR spectrometry. *Forensic Sci Int.* 2015;252:87-92. <https://doi.org/10.1016/j.forsciint.2015.04.025>
2. Gibbons S. 'Legal highs'--novel and emerging psychoactive drugs: a chemical overview for the toxicologist. *Clin Toxicol (Phila).* 2012;50(1):15-24. <https://doi.org/10.3109/15563650.2011.645952>
3. Nelson ME, Bryant SM, Aks SE. Emerging drugs of abuse. *Dis Mon.* 2014;60(3):110-32. <https://doi.org/10.1016/j.disamonth.2014.01.001>
4. Duffau B, Camargo C, Kogan M, Fuentes E, Cassels BK. Analysis of 25 C NBOMe in Seized Blotters by HPTLC and GC-MS. *J Chromatogr Sci.* 2016;54(7):1153-8. <https://doi.org/10.1093/chromsci/bmw095>
5. UNODC. United Nations Office on Drugs and Crime, World Drug Report 2017. 2017.
6. Wayhs CAY, Reis M, Mariotti KC, Romão W, Vaz BG, Ortiz RS, *et al.* NBOMe: perfil de apreensões da Polícia Federal no Brasil. *Rev Bras Crim.* 2016;5(3):22-9. <https://doi.org/10.15260/rbc.v5i3.136>
7. Ninnemann A, Stuart GL. The NBOMe series: a novel, dangerous group of hallucinogenic drugs. *J Stud Alcohol Drugs.* 2013;74(6):977-8. <https://doi.org/10.15288/jsad.2013.74.977>
8. Caldicott DG, Bright SJ, Barratt MJ. NBOMe - a very different kettle of fish. *Med J Aust.* 2013;199(5):322-3. <https://doi.org/10.5694/mja13.10926>

9. de Moraes DR, Barbosa IL, Cunha KF, Tripodi GL, Angolini CFF, Franco MF, *et al.* EASI-IMS an expedite and secure technique to screen for 25I-NBOH in blotter papers. *J Mass Spectrom.* 2017;52(10):701-6. <https://doi.org/10.1002/jms.3977>
10. Resolução da Diretoria Colegiada - RDC Nº 06, de 18 de Fevereiro de 2014, [http://bvsmms.saude.gov.br/bvs/saudelegis/anvisa/2014/rdc0006\\_18\\_02\\_2014.pdf](http://bvsmms.saude.gov.br/bvs/saudelegis/anvisa/2014/rdc0006_18_02_2014.pdf) (accessed 12.01.17), (2014).
11. UNODC. United Nations Office on Drugs and Crime, Drug Characterization/Impurity Profiling. Background and Concepts. Manual For Use By National Law Enforcement Authorities And Drug Testing Laboratories 2001. <https://www.unodc.org/pdf/publications/st-nar-32-rev1.pdf> (accessed 01.05.18), (2001).
12. Weyermann C, Marquis R, Delaporte C, Esseiva P, Lock E, Aalberg L *et al.* Drug intelligence based on MDMA tablets data I. Organic impurities profiling. *Forensic Sci Int.* 2008;(1):11-6. <https://doi.org/10.1016/j.forsciint.2007.10.001>
13. Papoutsis I, Nikolaou P, Stefanidou M, Spiliopoulou C, Athanaselis S. 25B-NBOMe and its precursor 2C-B: modern trends and hidden dangers. *Forensic Toxicology.* 2015;33(1):1-11. <https://doi.org/10.1007/s11419-014-0242-9>
14. Shulgin AT, Carter MF. Centrally active phenethylamines. *Psychopharmacol Commun.* 1975;1(1):93-8.
15. Bouso JC, Doblin R, Farre M, Alcazar MA, Gomez-Jarabo G. MDMA-assisted psychotherapy using low doses in a small sample of women with chronic posttraumatic stress disorder. *J Psychoactive Drugs.* 2008;40(3):225-36. <https://doi.org/10.1080/02791072.2008.10400637>
16. Gonzalez D, Ventura M, Caudevilla F, Torrens M, Farre M. Consumption of new psychoactive substances in a Spanish sample of research chemical users. *Hum Psychopharmacol.* 2013;28(4):332-40. <https://doi.org/10.1002/hup.2323>
17. Van Hout MC, Bingham T. 'Surfing the Silk Road': a study of users' experiences. *Int J Drug Policy.* 2013;24(6):524-9. <https://doi.org/10.1016/j.drugpo.2013.08.011>
18. Togni LR, Lanaro R, Resende RR, Costa JL. The variability of ecstasy tablets composition in Brazil. *J Forensic Sci.* 2015;60(1):147-51. <https://doi.org/10.1111/1556-4029.12584>
19. Gine CV, Espinosa IF, Vilamala MV. New psychoactive substances as adulterants of controlled drugs. A worrying phenomenon? *Drug Test Anal.* 2014;6(7-8):819-24. <https://doi.org/10.1002/dta.1610>
20. Mitrevski B, Wynne P, Marriott PJ. Comprehensive two-dimensional gas chromatography applied to illicit drug analysis. *Anal Bioanal Chem.* 2011;401(8):2361-71. <https://doi.org/10.1007/s00216-011-5234-6>

21. Mitrevski B, Veleska B, Engel E, Wynne P, Song SM, Marriott PJ. Chemical signature of ecstasy volatiles by comprehensive two-dimensional gas chromatography. *Forensic Sci Int.* 2011;209(1-3):11-20. <https://doi.org/10.1016/j.forsciint.2010.11.008>
22. Bossong MG, Brunt TM, Van Dijk JP, Rigter SM, Hoek J, Goldschmidt HM, *et al.* mCPP: an undesired addition to the ecstasy market. *J Psychopharmacol.* 2010;24(9):1395-401. <https://doi.org/10.1177/0269881109102541>
23. Cheng JY, Chan MF, Chan TW, Hung MY. Impurity profiling of ecstasy tablets seized in Hong Kong by gas chromatography-mass spectrometry. *Forensic Sci Int.* 2006;162(1-3):87-94. <https://doi.org/10.1016/j.forsciint.2006.02.055>
24. Coelho Neto J, Andrade AFB, Lordeiro RA, Machado Y, Elie M, Ferrari Júnior E *et al.* Preventing misidentification of 25I-NBOH as 2C-I on routine GC–MS analyses. *Forensic Toxicology.* 2017;35(2):5. <https://doi.org/10.1007/s11419-017-0362-0>
25. Arantes LC, Junior EF, de Souza LF, Cardoso AC, Alcantara TLF, Liao LM, *et al.* 25I-NBOH: a new potent serotonin 5-HT<sub>2A</sub> receptor agonist identified in blotter paper seizures in Brazil. *Forensic Toxicol.* 2017;35(2):408-14. <https://doi.org/10.1007/s11419-017-0357-x>
26. Andrade AF, Mamo SK, Gonzalez-Rodriguez J. Rapid Screening Method for New Psychoactive Substances of Forensic Interest: Electrochemistry and Analytical Determination of Phenethylamines Derivatives (NBOMe) via Cyclic and Differential Pulse Voltammetry. *Anal Chem.* 2017;89(3):1445-52. <https://doi.org/10.1021/acs.analchem.6b02426>